

Scanning Services
Large Format Scanners
Operating Software for Scanners
Intelligent Raster & CAD Software
Document Management Software
Online PlanRooms



IDEAL.com

PRO ScanDEX

Scan and Index on an unlimited number of fields for easy retrieval.

WHAT IS SCANDEX PRO?

ScanDEX Pro is a scanning, indexing, and archiving system for aperture cards and large format electronic files. With ScanDEX Pro you can scan your images, store, and index them on an unlimited number of fields for fast retrieval. Various indexing features include automatically load images to be indexed, automatically zoom to areas on the image for each index field, use of the scanner's default values and macros, etc.

ScanDEX Pro supports multiple ACS scanners (fourth through sixth generation) on a single workstation to speed up the archiving process. Multi-page management is also supported. ScanDEX Pro also provides easy network and on-line access to your archives.

FEATURES AND BENEFITS

- Scan, Index, and Archive in One Process
- Advanced Multi-Page TIFF Management
- Easy Upgrade Path
- Supports ISIS & IDEAL/Contex ACS Scanners
- Direct Printing to any Windows Compatible Printer

SCANNING

ScanDEX Pro supports ISIS and IDEAL/Contex ACS Scanners and other scanners by using the disk scanner, which monitors a directory on the hard disk. If it finds a raster file, then ScanDEX Pro performs the same operations as if the data was obtained directly from a scanner. ScanDEX Pro comes with one seat of ScanDEX Client for viewing indexed images over the network. For scanning large format drawings 25" to 54" wide on IDEAL/Contex large format scanners, users need IDEAL ScanOS.

INDEXING

ScanDEX Pro automatically queues and displays the drawings to be indexed. While you index a drawing, the scanner continues working on making the next drawing available. Scanning and Indexing can be performed simultaneously.

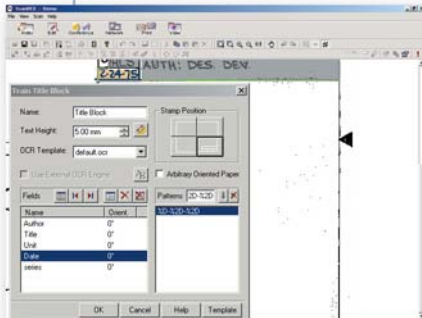
Separate the workload to optimize scanner and personnel utilization. Through the use of the disk scanner feature, scanning and indexing can be performed on a separate workstation. Indexing can be done manually or automatically. Store your documents inside the database for easy administration or place your document files anywhere on the network.

ARCHIVING

ScanDEX Pro stores drawings and indexes data in an ODBC compliant archive in any format. This gives you the opportunity to integrate already existing digital archives into ScanDEX Pro or link to an SQL or Oracle database. ScanDEX Pro can import databases created by IDEAL's ScanOS. View drawings over the network with ScanDEX client. Multiple users may view the drawing archive at the same time across the network, with multiple seats of ScanDEX client. The user interface to the archive is easy and customizable.

WHEN SOLUTIONS MATTER

An Online Demo is a great way to see a product in action from the convenience of your PC. Arrange a one-on-one Online Demo today by e-mailing sales@ideal.com or calling IDEAL at 1-888-524-3325.



ScanDEX Pro Specifications:

Supported Scanners	IDEAL/Contex ACS Scanners, ISIS & others via Disk Scanner
DPI	25 to 2400 dpi depending upon scanner used
Threshold Methods	Manual Threshold, Automatic Adaptive and B&W Thresholding, Gray Adaptive, and Auto-Photo
Number of Index Fields Supported	Unlimited
Image Functions	Flip, Invert, Reverse, Rotate, Trim, Auto-trim, De-skew, De-speckle, Measure
Database Format	Microsoft Jet Engine 3.0, Microsoft Access 7.0 or higher, ODBC compliant through Access
Add-Ons Available	ScanOS for scanning large format drawings, ScanDEX OCR for automatic indexing from Title Block Information
Scanner Parameters	Aperture Cards
Scanning Modes	256 graytone, 1-bit monochrome
Viewable File Formats Supported	Over 50 different raster file formats including TIFF, TIFF G4, CALS, CALS G4, JPEG, PCX, DCX, BMP Adobe Photoshop, PSD, EPS, etc.
Created File Formats	TIFF, TIFF G4, CALS G4
Index Field Types	Boolean, Byte, Date, Double, Long, Memo, Short, Single, Text
Alternate Databases Supported	Microsoft SQL Server, Oracle, Any ODBC Compliant Database
Recommended Hardware	Pentium III 500 or greater, 120 Mb RAM or greater, Windows NT 4.0 Workstation/2000
Additional Options Available	ScanDEX/CD for CD-ROM delivery of ScanDEX database & images with integrated viewer; IntraNETIX for viewing images on intranet or Internet